

**SCALEXTRIC**

4th Edition



**31 Track Plans**

[www.scalextric.com](http://www.scalextric.com)

## Contents

	Pages
Track Sections and Dimensions	3
2 Lane Circuits	4 - 9
4 Lane Circuits	10 - 13
Silverstone, England	14
Circuit de Catalunya, Spain	15
Adelaide, Australia	16
Magny-Cours, France	17
Kyalami, South Africa	18
Brands Hatch 4 Lane, England	19
Hints and Tips for Circuit Building and Good Running	20
Guide Blades and Pick-Ups, Past and Present	21
High-Tec Electronic Devices	22
Service and Spare Parts	23
Club Application Form	23

Scalextric Boxed Sets are supplied with good basic track circuits to introduce beginners to the fun of home motor racing. It is only natural that in time one should want to develop ones driving skill over something a little larger or more demanding.

This booklet has been prepared for just this situation and shows a selection of shapes and sizes, in no particular order, for you to select from whichever takes your eye.

The circuits should be regarded as suggestions and they may readily be varied by adding or removing sections but make sure you compensate each side of a circuit equally when doing this.

### *Some notes on driving*

Scalextric cars are designed to give maximum racing pleasure at a controllable speed but just like the real thing, go too fast on a corner and your cars will crash!



The hand throttle is purposely designed as a sensitive instrument, consequently a sharp squeeze of the trigger will certainly send your car flying off the track. What is required is a controlled squeeze. This is best cultivated by driving a car round the circuit slowly. It will become apparent that some acceleration is needed when negotiating banked or tight radius inner curves. The extra squeeze required to maintain the car in motion is rapidly learnt and from then on you can start to pick up speed. But remember that real racing drivers have a long apprenticeship before taking part in a Grand Prix event! There is an old motor racing maxim about cornering, "slow in - fast out" and this is every bit as relevant to Scalextric as the real thing.

### *About the circuit plans*

In order to equalise the lane lengths, changeover tracks C8030 (2-pieces) are usually shown where the design of the circuit is such that without them one car would always have the outside lane.

Generally, standard track sections are illustrated in the circuit plans. Chicane sections, straight and curved, can usually be substituted where appropriate as their dimensions are the same as those of standard straights and curves. Track borders can also be added when experience of racing on a circuit shows them to be desirable.

Track Supports are supplied with the majority of sets and additional ones which may be needed in some circuits are supplied in the C8038 Track Supports Pack. Obviously with some of the larger layouts a substantial quantity of supports will be required especially on the four lane circuits. When fitting the Track Supports position them in such a way that you create smooth gradients and not sharp ridges.

# Track Sections

**SCALEXTRIC**

## Curves



C151



C152



C153



C154

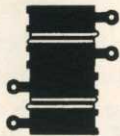


C156

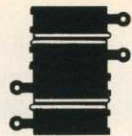


C187

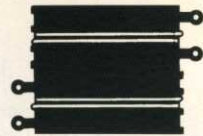
## Straights



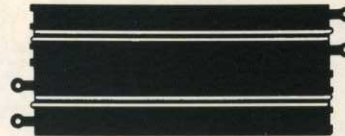
C157



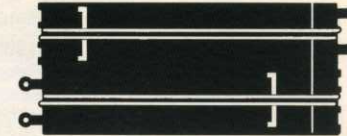
C158



C159

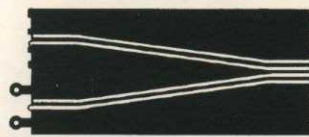


C160

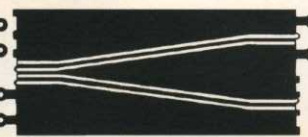


C8004

## Chicanes and Accessories



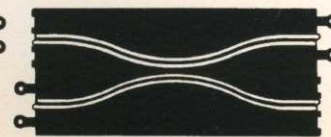
C8007



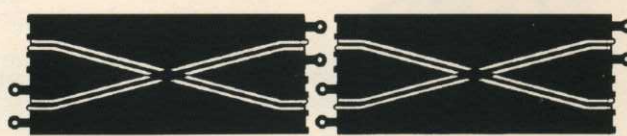
C176



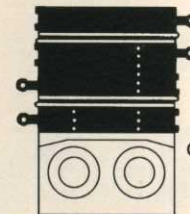
C8005



C179



C8030



C277



Once you have become familiar with handling Scalextric track sections it is easy to recognise which is which. For the benefit of newcomers to the hobby the illustrations show their shapes and markings. Simplified symbols are used in the Circuit Plans on the following pages.

## Curves

- C151 Standard Curve. Outside Radius 14 $\frac{1}{2}$ " 37.2cms 45°
- C152 Inner Curve. Outside Radius 8 $\frac{1}{2}$ " 21.5cms 45°
- C153 Outer Curve. Outside radius 20 $\frac{3}{4}$ " 52.7cms 22 $\frac{1}{2}$ °
- C154 Half Standard Curve. Outside radius 14 $\frac{1}{2}$ " 37.2cms 22 $\frac{1}{2}$ °
- C156 Double Inner Curve. Outside Radius 8 $\frac{1}{2}$ " 21.5cms 90°
- C187 Banked Curve. Inside Radius 8 $\frac{1}{4}$ " 20.8cms.  
Outside Radius 13 $\frac{1}{8}$ " 35.2cms 60° (6 to a circle)

## Straights

- C157 Short Straight 3 $\frac{1}{6}$ " 7.8cms

- C158 Quarter Straight 3 $\frac{1}{6}$ " 8.7cms
- C159 Half Straight 6 $\frac{1}{4}$ " 17.5cms
- C160 Straight 13 $\frac{3}{4}$ " 35cms
- C8004 Starting Straight 13 $\frac{3}{4}$ " 35cms

## Chicanes and Accessories

- C8007 Short Chicane 13 $\frac{3}{4}$ " 35cms (2 supplied)
- C8009 Straight Chicane 13 $\frac{3}{4}$ " 35cms
- C8005 Skid Chicane 13 $\frac{3}{4}$ " 35cms
- C8010 Curved Chicane. Outside Radius 14 $\frac{1}{2}$ " 37.2cms 45°
- C8030 Changeover Tracks 13 $\frac{3}{4}$ " 35cms (2 supplied)
- C277 Lap Counter 6 $\frac{1}{4}$ " 17.5cms

